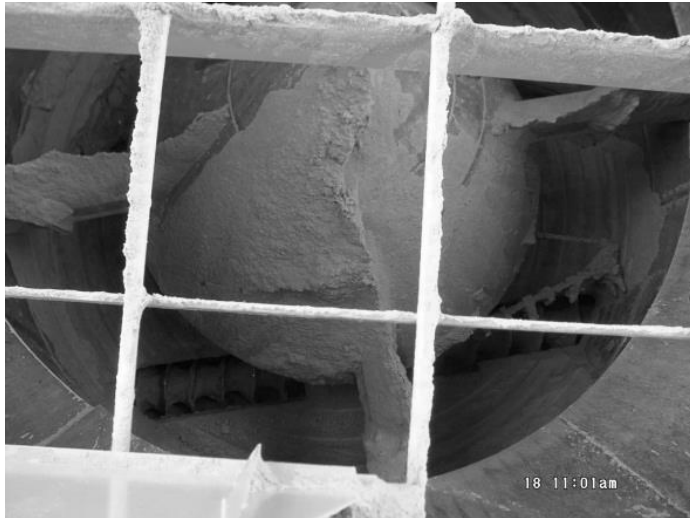


Plants for difficult to handle bulk materials



Jaworzno, Poland YEAR OF CONSTRUCTION 2003

DESCRIPTION

For the separate reception of extremely heavy, weary and hard to handle REA-gypsum, SHW installed a truck loading system for tippers in Jaworzno. This round silo plant is equipped with a SHW rotor discharge system including an additional rotor cone and a SHW relief system. For security reasons this reception station was covered by a security pile grate.

TECHNICAL DATA

- > bulk material
REA-gypsum
- > silo
88 m³
- > silo dimensions
Ø 5 m / h 4.5 m
- > discharge unit
rotor unit
- > discharge efficiency
55 m³/h
- > conveying technique / additional equipment
conveying screws

